



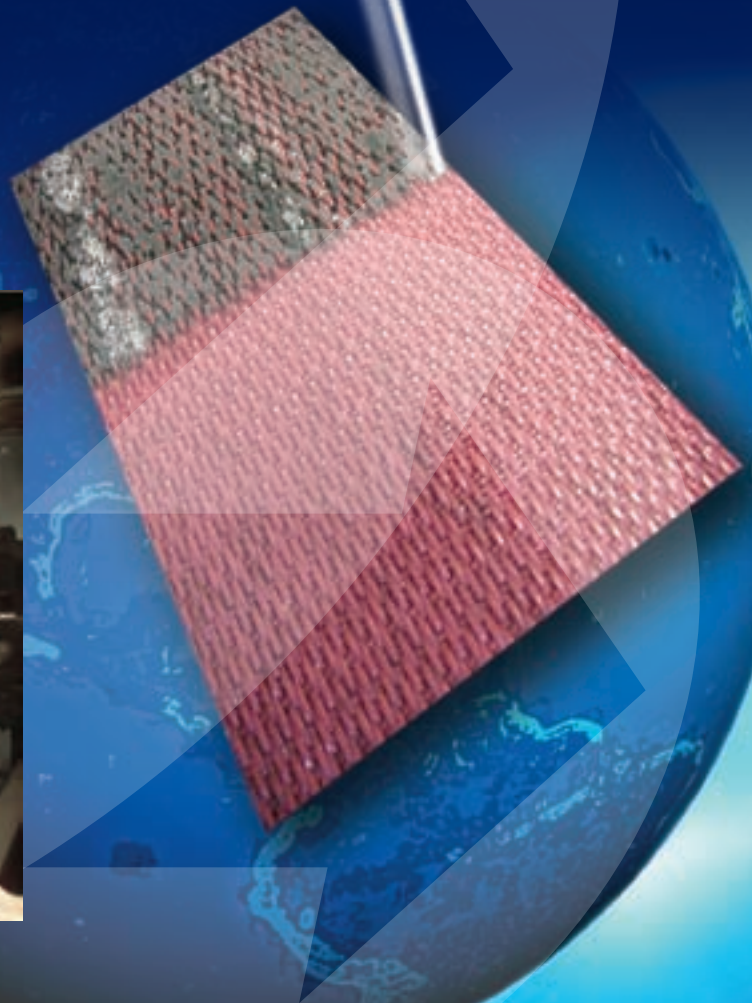
Professional high pressure water jet technology

Projet BV
Industrial Zone Weerterveld 51
6231 NC, Meerssen, Netherlands
PO Box 32
6230AA Meerssen, Netherlands
Tel +31-43-365-3100
Fax +31-43-365-3832
info@pro-jet.nl
www.pro-jet.nl

Power Cleaner:

High Pressure cleaning

- for Dryer Fabrics
- for Press Felt
- for Forming Wires



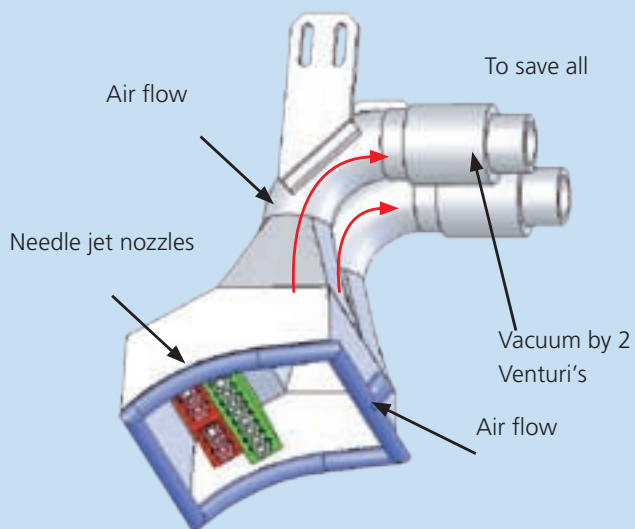
Traversing Beam

The PowerCleaner, is a continuous High Pressure Traversing Shower, designed for the dryer section of paper-, board- and tissue-machines.

A clean dryer fabric, with consistently high air permeability, delivers important productivity and performance advantages for dryer section applications. The desired end result, of a clean dryer fabric, is a substantial improvement in available dryer capacity.



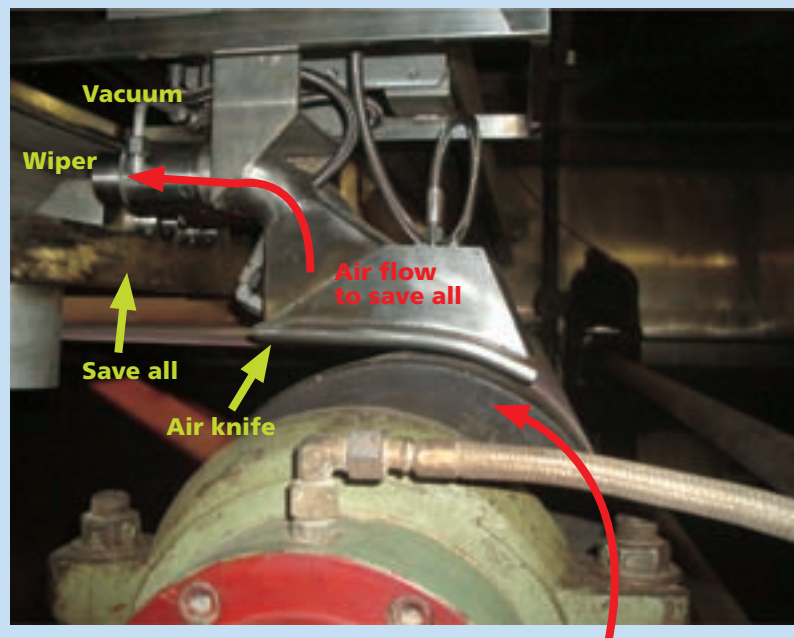
Cleaning Head



2 Modes: Continuous + Batch (Shock) mode

1. Continuous mode:

- 24 hours per day, as long as paper machine is running
- Cleaning pressure: up to 350 bar (5000psi)
- Water consumption / nozzle: 0.5l/min (0.1GPM)
- Multiple nozzle (up to 6), orifice: 0.1-0.4mm
- Air consumption: 1 m³/min (30cfm)



2. Batch (Shock) mode:

- Only during breaks
- Cleaning pressure: up to 80 bar (1200psi)
- Batch water consumption : 15l/min (3.5GPM)
- Additional nozzles: 8 (total 14), orifice: 0.8mm

Energy Data

Continuous:

Maximum pressure:

350 bar (5000 psig)

Water consumption per nozzle:

0.5 l/min (0.12 GPM)

Compressed air consumption:

1.0 m³/min (35 CFM)

Batch:

Maximum pressure:

80 bar (12 psig)

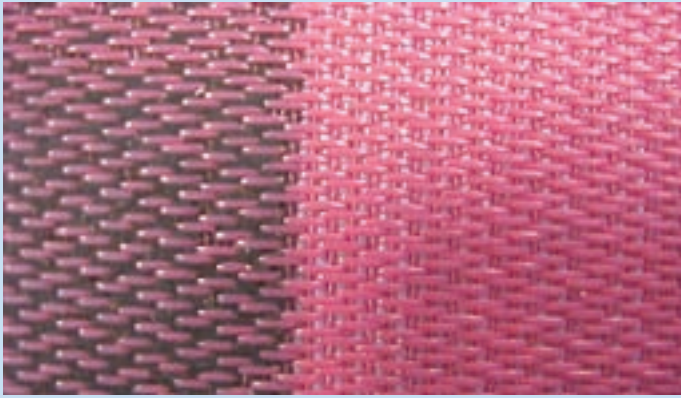
Water consumption:

15 l/min (3.5 GPM)

Compressed air consumption:

1.0 m³/min (35 CFM)•

Cleaning Result



Self Cleaning Station

Fully automatic auto-cleaning in park position, outside dryer hood:

Features & Benefits:

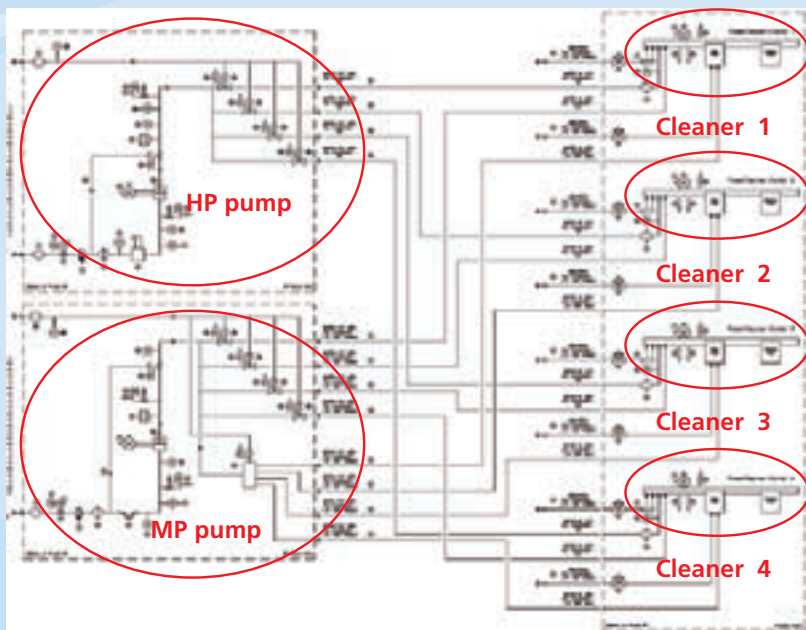
- Fully automatic
- Every 10 – 60 minutes
- Brush will clean air knife
- Water will flush cleaning from inside
- Because park position is outside dryer hood, nozzles can be changed during production without entering the dryer hood.
- Swing doors close dryer hood again, to avoid heat loss.



Drive motor outside Dryer Hood

60 bar water cleans head from inside

System Layout / Scope of supply



Pump Module: up to 5 Cleaners can be supplied with one module

The pump module is completely assembled on a stainless steel frame, with integrated high-pressure filters installed. All safety components, to include pressure switches, temperature switches, solenoid valves, pressure regulator, etc. are included in the pump module supply. The pump module is completely pre-assembled with stainless steel piping and all electrical connections terminated in a junction box that is part of the pump module supply.

Control system: up to 5 Cleaners can be controlled with one system

A central control cabinet is supplied with single or multiple ProJet cleaning system installations. In addition, each ProCleaner is supplied with a local control case. As an option, a Touch Panel control case will be supplied for remote control of all ProJet systems from a control room or other central location.

Main control panel



Touch Panel for Remote Control



Return on Investment

1. Longer lifetime of fabrics: up to 70%
2. Reduction of steam: up to 5%
3. Reduction of breaks due to dirty fabrics: up to 100%
4. Elimination of downtime for manual cleaning
5. Higher speed possible due to improved drying: up to 5%
6. Reduction of chemicals: up to 100%
7. Elimination of downgrades caused by marking on the sheet by stickies on rolls or fabrics.
8. Better CD profile